

Annual Report 2008

BOARD OF TRUSTEES

Chair, Board of Trustees
Richard M. Burnes Jr.

Vice Chairs, Board of Trustees
Paul Egerman
Jonathan J. Fleming
Gwill E. York

President and Director
Ioannis N. Miaoulis

Treasurer
John T. Slakey

Secretary
Diane R. Gordon

Assistant Secretary
Wayne Bouchard

Corporate Counsel
Wayne M. Kennard

Chair, Board of Overseers
Laura Barker Morse

Vice Chair, Board of Overseers
Ranch C. Kimball

TRUSTEES

John E. Abele
Richard I. Anders
Howard M. Anderson
Henry P. Becton Jr.
Jeffrey R. Beir
Joan M. Bergstrom
Vanu Bose
Richard M. Burnes Jr.
Joseph Campanelli
Richard A. Carpenter
Stephen E. Coit
James Daniell
Jaishree Deshpande
Sally L. Dias
Gary T. DiCamillo
Richard A. DiPerna

Paul Egerman
Jonathan J. Fleming
Diane R. Gordon
Helen Greiner
Leslie E. Greis
Daphne Hatsopoulos
Ann Kania
Donald M. Kaplan
Brian T. Keane
Michael E. Kolowich
Leo X. Liu
William A. Lowell
Sean T. McGrath
Howard Messing
Elizabeth Moore
Sandra O. Moose
Kenneth J. Novack
Finley H. Perry Jr.
Joyce L. Plotkin
John F. Reno
Mitchel J. Resnick
John C. Rutherford
William Schawbel
Matthew D. Shedd
Malcolm L. Sherman
Lawrence A. Siff
Ira Stepanian
Henri A. Termeer
Hal R. Tovin
Lawrence Weber
Gwill E. York

NON-ELECTED VOTING TRUSTEES

Jeffrey Behrens
John B. Hopkins
Wayne M. Kennard
Ioannis N. Miaoulis
Laura Barker Morse

EX OFFICIO TRUSTEES

Mitchell D. Chester
David P. Driscoll
Richard K. Sullivan Jr.

TRUSTEES EMERITI

Edward J. Boudreau Jr.
Jane C. Bradley
Truman S. Casner
Brit J. d'Arbeloff
David W. Ellis
M. Dozier Gardner
John D. Hamilton Jr.
Julie E. Henry
Emily C. Hood
Frederick H. Lovejoy Jr.
Kenneth J. Novack
Robert C. Seamans Jr.*
Joan C. Suit
Samuel O. Thier

LIFE TRUSTEES

Vernon R. Alden
J.P. Barger
Warren S. Berg
Helene R. Cahners-Kaplan
Edith LaC. Dabney
George P. Edmonds Jr.
John A. Fibiger
Walter J. Gamble
George P. Gardner Jr.
Morris Gray
Paul E. Gray
Jerome C. Hunsaker Jr.
Robert F. Jasse
Mrs. Roger L. Nichols
James R. Nichols
Mrs. James L. Phillips
Preston H. Saunders
Ralph Z. Sorenson
Neil W. Wallace
D. Reid Weedon Jr.
Sinclair Weeks Jr.
Donald B. Wilson**

Key

* Deceased
** Resigned

Fiscal Year 2008 was an exciting and innovative period in which visitors experienced a wide variety of interactive, one-of-a-kind exhibits that ignited imaginations, challenged minds, and fulfilled childhood fantasies. In fall 2007 *CSI: The Experience* turned Museum visitors into crime scene investigators. *Double Exposure* displayed the shocking effects of climate change by comparing aerial photographs taken by Museum founding director Brad Washburn with identical photos taken 50 years later by environmental photojournalist David Arnold. In spring 2008 *Baseball as America* gave visitors a chance to delve deeply into our national pastime, learning not only about the sport's rich history, but also about the science and technology behind the game's magic.

Among other milestones, events, and advancements, the Museum celebrated the 10th anniversary of Women in Science, a unique forum for distinguished female scientists and engineers to speak to an all-women audience, exchange ideas, and make lasting connections. And trustee John Abele and his brother, Bruce, presented a captivating lecture about their search for—and eventual discovery of—the USS *Grunion*, a Gato-class submarine commanded by their father that disappeared without a trace in 1942.

In a special dedication event, we unveiled the Sophia & Bernard M. Gordon Wing in November 2007. The new two-level space serves as the headquarters of the National Center for Technological Literacy® (NCTL®) and also houses the creative team activities for exhibits, education, and research and evaluation. In 2006 the Gordons made an extraordinary gift of \$20 million, representing the largest single individual contribution in Museum history.

In November 2007 we bestowed the Bradford Washburn Award on bestselling author Bill Bryson. This prestigious prize is given to an individual who has made an outstanding contribution toward public understanding and appreciation of science and its vital role in our lives. In April 2008 we honored James J. McCarthy PhD, Alexander Agassiz Professor of Biological Oceanography at Harvard University, with the Walker Prize, which recognizes "meritorious published scientific investigation and discovery" in any scientific field.

Like most museums, we are challenged to develop exhibits and build experiences that draw visitors in the context of a world exploding with scientific and technological knowledge. In the past, we could count on large, traveling "blockbuster exhibits" to drive visitors and produce revenue; this is no longer the case. Recognizing this—and forecasting a likely loss in revenue—Museum leadership took preemptive action to assure ongoing financial strength. We needed new ways to create exhibits, especially by partnering with other organizations to share expertise, so we reorganized our management structure, which reduced staff by 10% in June.

Concurrently, we had to deal with a shortfall in attendance and related revenues. Recognizing this early on, we undertook a number of cost-saving measures to mitigate the potential deficit. By taking these steps, we reduced what had been projected as an over \$2.5 million operating loss to just over a \$100,000 loss. As a result of these two efforts, we now have in place a leaner, more nimble organization with the flexibility and focus to take advantage of new opportunities for growth and change. As we look forward, we are grateful for the efforts of our staff, volunteers, board, overseers, and supporters who pulled together during this demanding time to better position the Museum to carry out its strategic vision.



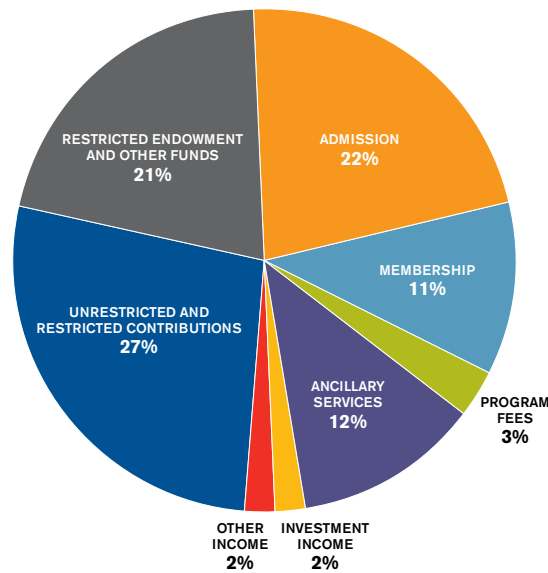
Museum of Science.
mos.org

Ioannis Miaoulis
President and Director

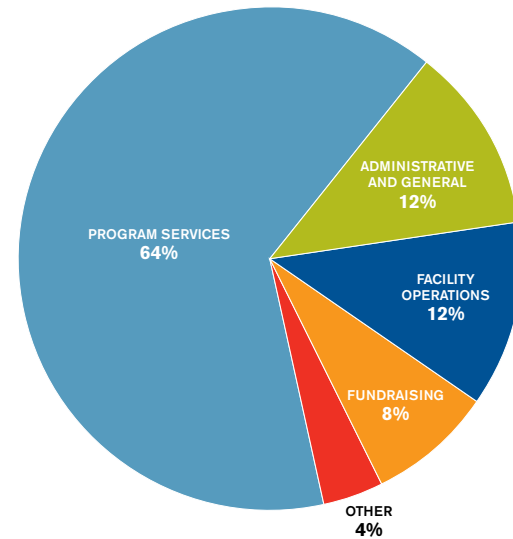
Richard M. Burnes Jr.
Chair, Board of Trustees

- \$49.6 million** operating budget
- \$97.5 million** endowment
- \$18 million** philanthropic contributions
- 300** full-time employees
- 51** part-time employees
- 196** temporary employees
- 600** volunteers contributed more than **47,720** hours last year, the equivalent in volunteer hours of 23 full-time staff
- 1.5 million visitors:** the most visited cultural attraction in Boston
- 42,000** member households
- 237** corporate members
- 226,000** children took school field trips to the Museum
- 81,000** students served by traveling programs
- 21,000** children attended an overnight program
- 500,000** students nationwide used the Museum's *Engineering is Elementary (EIE)* curriculum
- Rated #3** of the ten best science centers in 2008 by *Parents Magazine*

FISCAL YEAR 2008 SOURCES OF OPERATING FUNDS \$49,529,000



FISCAL YEAR 2008 USES OF OPERATING FUNDS \$49,633,000

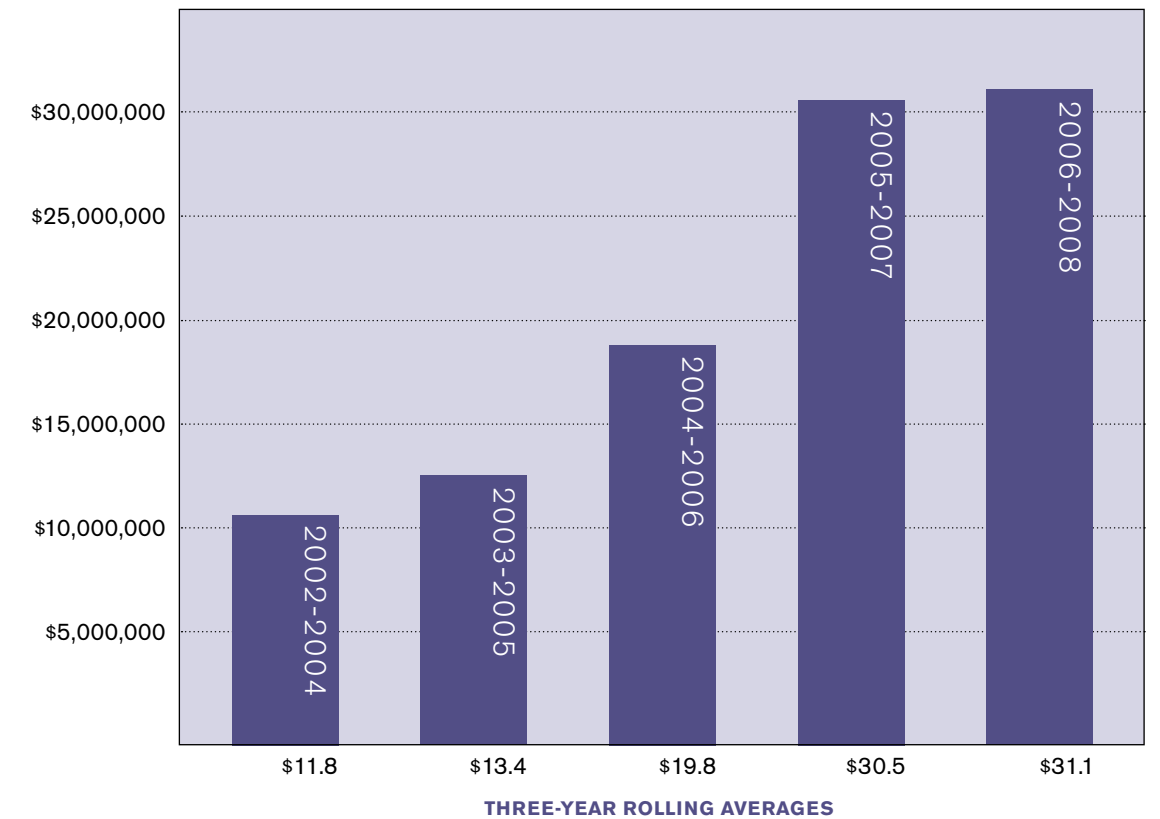


ENDOWMENT PERFORMANCE

FY 2006	FY 2007	FY 2008
\$89,656,000	\$103,634,000	\$97,479,000

As we look forward, we are grateful for the efforts of our staff, volunteers, board, overseers, and supporters who pulled together during this demanding time to better position the Museum to carry out its strategic vision.

PHILANTHROPIC CONTRIBUTIONS



MUSEUM OF SCIENCE SENIOR MANAGEMENT TEAM

President and Director
Director, National Center for Technological Literacy

Ioannis N. Miaoulis

Chief Operating Officer

Wayne M. Bouchard

Senior Vice President, Strategic Initiatives

Associate Director, National Center for Technological Literacy

Lawrence Bell

Senior Vice President, Advancement

Joan Stephens Hadly

Vice President, Marketing and External Affairs

Cynthia G. Mackey

Vice President, Visitor Services and Operations

Jonathan R. Burke

Vice President, Education

Paul M. Fontaine

Vice President, Human Resources

Britton S. O'Brien

Vice President, Finance and System Services

John Slakey

Manager, Office of the President and Trustee and Overseer Relations

Amelia Brock

OPERATING INCOME AND EXPENSES FOR THE YEAR ENDED JUNE 30, 2008

(\$ in thousands)

	2008	2007
Operating Income:		
SUPPORT REVENUE	\$10,875	\$13,049
	\$38,654	\$41,938
Total Operating Income	\$49,529	\$54,987
Operating Expenses		
PROGRAM SERVICES	\$32,041	\$31,985
SUPPORTING SERVICES	\$17,592	\$22,953
Total Operating Expenses	\$49,633	\$54,938
Net Operating Income	(\$104)	\$49