



This year will rightly be remembered in Museum of Science history for the grand opening of the *Hall of Human Life (HHL)*. This exhibition, the largest and most complex ever produced by the Museum, represents a true milestone in terms of content and technology. *HHL* has 70 interactive learning experiences and incorporates the most current research and perspectives from a network of over 130 content advisors.

In fiscal year 2014, the Museum raised \$22.14 million, including a record \$2.85 million of unrestricted support for the Annual Fund. As the Campaign for the Museum of Science enters its final year, we anticipate a strong finish to meet and exceed our goal of \$250 million. Progress to date has been phenomenal. We closed fiscal year 2014 with \$239.9 million in Campaign gifts and commitments. This support has been crucial for the Museum to undertake development of new exhibits like the *Science Behind Pixar*, scheduled to open next June, and the *Yawkey Gallery on the Charles River*, set to debut in December 2015.

The Museum formed two new board-level committees in fiscal year 2014, the Special Projects Action Committee and the Food Task Force:

- Composed of trustees, overseers, and friends of the Museum, and chaired by trustee William Swanson, the Food Task Force will explore ways to feature the topic of food in its many and varied aspects to forward the Museum's STEM education mission in exhibits, adult programs, and curriculum development.
- Chaired by trustee Mike Thonis, the Special Projects Action Committee will provide advice and counsel on a variety of special projects in the community, while expanding the scope and impact of programs like the Museum's Boston Marathon® participation and the Washburn Challenge.

The Museum continues to serve as an advocate for STEM education (science, technology, engineering, and mathematics) through our National Center for Technological Literacy. In addition to developing K-12 engineering curricula, we convene academic and civic leaders for conferences, workshops, and policy forums on education. In March, U.S. Representative Joe Kennedy III (D-MA) addressed teachers, superintendents, and other educational leaders from 15 Massachusetts and New Hampshire school districts during a Gateway Project Symposium at the Museum.

We would like to thank our volunteers, interns, and staff for their outstanding work in fiscal year 2014. We would like to thank our trustees and overseers for their service and commitment to the Museum of Science. And we would like to thank our community of members and donors who play a key role in our mission to transform the nation's relationship with science and technology.

  
Ioannis N. Miaoulis  
President and Director

  
Howard Messing  
Chair, Board of Trustees

**BOARD OF TRUSTEES (FY14)**

**Chair, Board of Trustees**  
Howard Messing

**Vice Chairs, Board of Trustees**

Joshua Boger  
Donald M. Kaplan  
Michael G. Thonis  
Gwill E. York

**TRUSTEES**

Jeffrey R. Beir  
Joshua Boger  
Richard M. Burnes Jr.  
Richard A. Carpenter  
Michael Champa\*  
Yet-Ming Chiang  
Stephen E. Coit  
Nancy E. Dempze  
Jaishree Deshpande  
Gary T. DiCamillo  
Richard A. DiPerna  
Deborah Dunsire  
Gretchen S. Fish  
Jonathan J. Fleming  
Gary R. Gregg  
Helen Greiner  
Leslie E. Greis  
Steven Haley  
Daphne Hatsopoulos  
Jane Hirsh  
Carol Ann Kania  
Donald M. Kaplan  
Ranch C. Kimball  
Wendy W. Kistler  
Kenneth D. Legg  
Leo X. Liu  
Kurt Melden  
Howard Messing  
Elizabeth Moore  
Laura Barker Morse  
Jane Pappalardo

Thomas J. Pincince  
Eugene E. Record Jr.  
Elizabeth G. Riley  
George Scangos  
Matthew D. Shedd  
Malcolm L. Sherman  
Lawrence A. Siff  
Ira Stepanian  
Howard H. Stevenson  
William H. Swanson  
Henri A. Termeer  
Michael G. Thonis  
Hal R. Tovin  
Gwill E. York

**NON-ELECTED VOTING TRUSTEES**

**President and Director,  
Museum of Science**  
Ioannis N. Miaoulis

**Chair, Board of Overseers**  
Patricia M. Lassiter

**Corporation Counsel**  
Wayne M. Kennard

**Chair, The Innovators**  
John Stafford

**President, Volunteer Service League**  
Damase Z. Caouette

**EX OFFICIO TRUSTEES**

**The Commissioner,  
Massachusetts Department of  
Elementary and Secondary Education**  
Mitchell D. Chester

**The Commissioner,  
Massachusetts Department of  
Conservation and Recreation**  
Jack Murray

**TRUSTEES EMERITI**

**President Emeritus**  
David W. Ellis

John E. Abele  
Jane C. Bradley  
Brit J. d'Arbeloff  
Sally L. Dias  
M. Dozier Gardner  
Diane R. Gordon  
Julie E. Henry  
Emily C. Hood  
Frederick H. Lovejoy Jr.  
Kenneth J. Novack  
John F. Reno  
William Schawbel  
Joan C. Suit  
Samuel O. Thier

**LIFE TRUSTEES**

Vernon R. Alden  
J.P. Barger  
Warren S. Berg  
Edith LaC. Dabney  
George P. Edmonds Jr.  
John A. Fibiger  
Walter J. Gamble  
Paul E. Gray  
Mrs. Roger L. Nichols  
James R. Nichols  
Jane Phillips\*\*  
Preston H. Saunders  
Ralph Z. Sorenson  
Neil W. Wallace  
D. Reid Weedon Jr.  
Sinclair Weeks Jr.

\* Resigned  
\*\* Deceased

**TICKETS**

Annual Report 2014



Museum of Science.  
mos.org



- \$58.9 million** operating budget
- \$110 million** endowment
- \$22.1 million** philanthropic contributions
- 357** full-time employees
- 86** part-time employees
- 209** temporary employees
- 561** volunteers contributed a total of **48,753** hours to 35 different programs – the equivalent of 23 full-time employees.
- 1.446** million visitors
- 50,764** member households
- 185** corporate members
- 170,894** school children took field trips to the Museum
- 18,942** children and chaperones attended overnight programs
- 97,600** individuals served (84,350 school children; 13,250 public audience) served by Traveling Programs, covering **63,632** miles throughout New England and New York State;
- \$90,307** in scholarships awarded (approximately 26% of total reservations)
- 3,253** free Exhibit Halls passes provided to Massachusetts residents qualifying for Electronic Benefits Transfer (EBT) or Supplemental Nutrition Program for Women, Infants, and Children (WIC)



**MUSEUM OF SCIENCE SENIOR MANAGEMENT TEAM**

**President and Director**  
 Director, National Center for Technological Literacy®  
 Ioannis N. Miaoulis

**Chief Operating Officer**  
 Wayne M. Bouchard

**Senior Vice President, Strategic Initiatives**  
 Associate Director, National Center for Technological Literacy®  
 Lawrence Bell

**Senior Vice President, Advancement**  
 Joan Stephens Hadly

**Vice President, Marketing and External Affairs**  
 Cynthia G. Mackey

**Vice President, Visitor Services and Operations**  
 Jonathan R. Burke

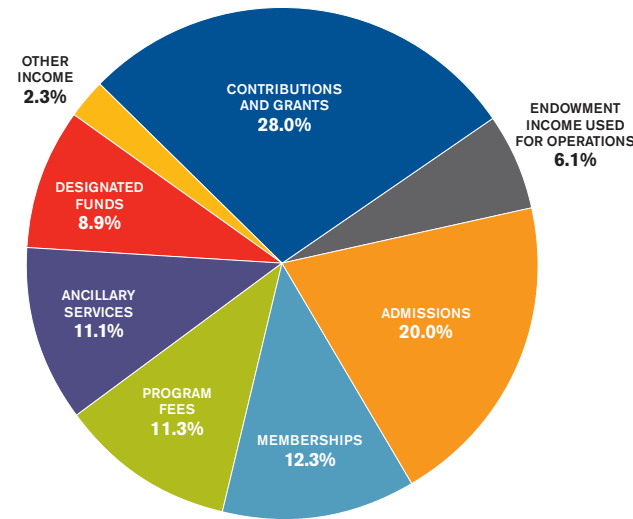
**Vice President, Education**  
 Paul M. Fontaine

**Vice President, Human Resources**  
 Britton S. O'Brien

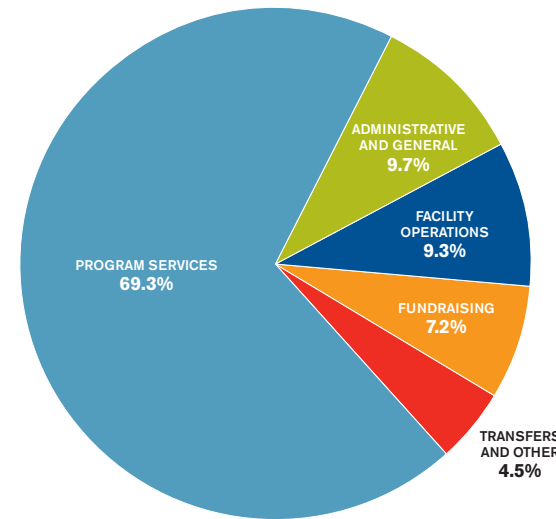
**Vice President, Finance and System Services**  
 John T. Slakey

**Manager, Office of the President**  
 Mary McCann

**FISCAL YEAR 2014 SOURCES OF OPERATING FUNDS \$58,914,000**



**FISCAL YEAR 2014 USES OF OPERATING FUNDS \$58,883,000**



**ENDOWMENT MARKET VALUE JUNE 30**

FY 2012	FY 2013	FY 2014
\$90,504,000	\$96,410,000	\$110,077,000

**OPERATING INCOME AND EXPENSES FOR THE YEAR ENDING JUNE 30, 2014**  
 (\$ in thousands)

	2012	2013	2014
<b>Operating Income:</b>			
SUPPORT REVENUE	\$16,195	\$16,405	\$16,482
REVENUE	\$40,485	\$39,319	\$42,432
<b>Total Operating Income</b>	\$56,680	\$55,724	\$58,914
<b>Operating Expenses</b>			
PROGRAM SERVICES	\$36,136	\$39,016	\$40,814
SUPPORTING SERVICES	\$20,532	\$16,675	\$18,069
<b>Total Operating Expenses</b>	\$56,668	\$55,691	\$58,883
<b>Net Operating Income</b>	\$12	\$33	\$31

- The Colonel Francis T. Colby Award was presented to Malcolm Sherman and Ira Stepanian, both past chairs of the board of trustees, in recognition of their many years of volunteer leadership and support of the Museum.
- World-renowned elBulli chef Ferran Adrià spoke at a public program to celebrate the U.S. premiere of his exhibition *Innovation in the Art of Food*.
- An anonymous \$2.5 million grant was received to undertake major environmental sustainability improvements in the Museum's lobby, concourse, and parking garage.
- Design Challenges* marked its 10th anniversary. Since opening in 2003, *Design Challenges* has served over 500,000 visitors.
- The Mugar Omni Theater hosted the world premiere of *Jerusalem* on September 13, 2013.
- The Museum's Engineering is Elementary® project expanded its offerings to include afterschool curricula: Engineering Adventures® for grades 3-5 and Engineering Everywhere™ for middle school grades 6-8.
- The Museum presented *Our Global Kitchen*, an exhibition exploring the food system—growing, transporting, cooking, eating, and celebrating—organized by the American Museum of Natural History.
- Biogen Idec and the Biogen Idec Foundation were honored as the 2014 Stars of STEM at the Museum's annual signature event, *The Science Behind the Stars*.
- On May 25, the Museum co-hosted with Raytheon the opening of *2theXtreme: MathAlive!*, an exhibit designed to inspire, to spark the imagination, and to reveal the endless possibilities of math.
- The American Society for Engineering Education presented its "President's Award" to president and director Ioannis Miaoulis and the Museum's National Center for Technological Literacy®.

**PHILANTHROPIC CONTRIBUTIONS**

